

1500 Series™ Electric Strike



Experience a safer
and more open world

The HES 1500 Series electric strike is more than a new heavy duty, low profile solution for latchbolt locks. It accommodates every brand of cylindrical or mortise lock designed to work with a 4-7/8" strike plate.



Elegant Form & Function

- Adjustable integrated shim for changing door conditions
- Field upgradeable options
- Integrated monitoring of latchbolt and/or door position switch

Designed with the Installer in Mind

- Accommodates all brands of mortise and cylindrical locks
- Dual voltage 12/24VDC
- Field selectable fail safe/fail secure

Convenient & Versatile

- Interchangeable accessories work with both models
- Field serviceable components
- All faceplates are interchangeable between the 1500 and 1600



Grade 1



SecuriCare
Warranty



Mortise Locks
without
Deadbolt



Cylindrical
Locksets



Field Selectable
(Fail secure
/Fail safe)



Dual Voltage
12/24



PoE
Friendly



Fire Rated



Windstorm
Rated



Outdoor
Rated



Burglary
Rated

Features

- Stainless steel construction
- Tamper resistant
- Static strength 1500 lbs
- Dynamic strength 70 ft-lbs
- Endurance 1,000,000 cycles
- Field selectable fail safe/fail secure
- Non-handed
- Interchangeable faceplates and accessories
- Field replaceable components
- Fully finished faceplate, keeper, case and trim
- Field adjustable integrated shim
- Electrolynx[®] connectors
- Dual voltage 12/ 24 VDC/VAC
- Suitable for Outdoor Use

Certifications

- ASTM E152 Fire Door Compliant
- ANSI/ASTM E330
- ANSI/BHMA A156.31, Grade 1
- ANSI/SDI 250.13 Windstorm Resistant
- CAL FIRE, 3776-1654:0500
- NFPA-252 fire door Compliant
- RoHS Compliant
- California State Fire Marshal Listed (old)
- Florida Building Code Approved TAS 201, 202, 203 (old)
- Environmental Product Declaration (EPD)
- UL 1034 Burglary-Resistant Listed
- UL 10C Fire-Rated, 1-1/2 Hour Double Door [Fail Secure only]
- UL 10C Fire-Rated, 3 Hour Single Door [Fail Secure Only]
- UL 294 Listed

Specifications

Frame Application

- Metal
- Wood

Electrical

- .24 Amps at 12 VDC/VAC
- .12 Amps at 24 VDC/VAC
- DC continuous duty/AC intermittent duty only

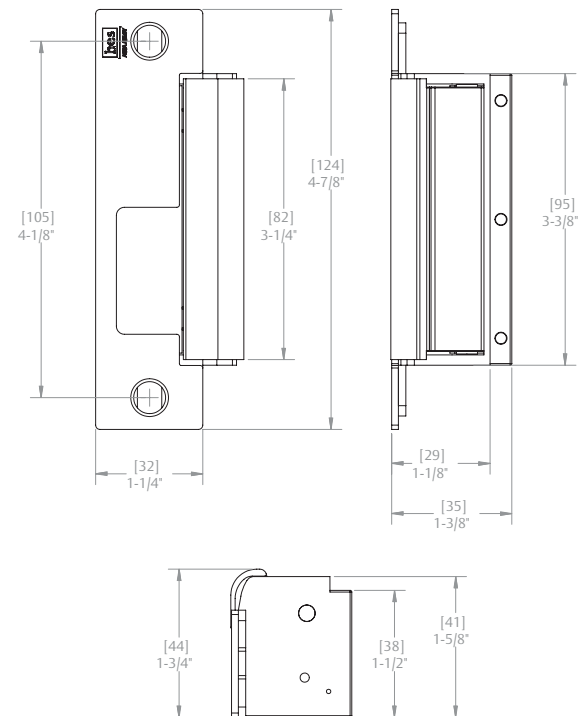
Options

- LM – Lock monitor
- DLM – Dual lock monitors
- LMS – Lock monitor and strike monitor
- DLMS – Dual lock monitors and strike monitor

Accessories

- 157 Torx[®] screws
- HESCUT-MTK Metal Template Kit
- OPT-1SRK Spring Replacement kit
- OPT-1LM Single lock monitor
- OPT-1DLM Dual lock monitors
- MOD-1SOL Solenoid Replacement Module

Dimensions



How to Order

SERIES	MODEL	FINISH*	OPTION (S)**
1500	—	— 630	— LM
1500 Universal Electric Strike; faceplate option kits ordered separately	C* Complete Electric Strike; includes 1LB faceplate kit for latchbolts	605 Bright Brass	(blank) No Monitor
		606 Satin Brass	LM Lock Monitor
		612 Satin Bronze	DLM Dual Lock Monitor
		613 Bronze Toned	LMS Lock Monitor and Strike Monitor
		613E Dark Oxidized Satin Bronze Powder	DLMS Dual Lock Monitors and Strike Monitor
		629 Bright Stainless Steel	
		630 Satin Stainless Steel	
		BSP Black Suede Powder	

*Complete Pacs are only available in the 630 finish **LMS/DLMS factory installed only option.



800 626 7590 | hesinnovations.com
 10027 S. 51st Street, Ste. 102
 Phoenix, AZ 85044 USA

Printed in the U.S.A. Patent pending and/or patent www.assaabloydss.com/patents
 Copyright © 2024, Hanchett Entry Systems, Inc., an ASSA ABLOY Group company.
 All rights reserved. Reproduction in whole or in part without the express written permission of Hanchett Entry Systems, Inc. is prohibited. HES-111-0324