

Folger Adam 700 Electric Strike

Works with cylindrical and mortise locksets without a deadbolt



3 hour fire-rated, industrial grade electric strike designed for extreme heavy duty applications.

The 700 series is a 3 hour fire-rated, industrial grade electric strike designed for extreme heavy duty applications. The all stainless steel construction of this device makes it ideal for high abuse applications. The 712 series is designed to accommodate 1/2" throw latchbolts, and the 712-75 is designed to accommodate 3/4" latchbolts.

*NOTE: These products will require relocation of the center line when used with mortise locks. Consult customer support regarding use with the Best 40 series.

Features

- Tamper resistant, heavy-duty construction
- Constructed entirely of stainless steel for strength and corrosion resistance
- Static strength 1,500 lbs.
- Dynamic strength 70 ft-lbs
- Horizontally adjustable keeper to allow for door and frame misalignment
- 1/2" keeper depth (712 and 732)
- 3/4" keeper depth (712-75 and 732-75)
- Non-handed
- Fail secure (standard)
- Plug-in connector
- SecuriCare five-year, no-fault, no questions asked warranty (Addition of SMART Pac® III extends the warranty to 10 years)

Options

- Fail Safe
- LBMLCM - Latchbolt & Locking Cam Monitor

Accessories

- 152 Universal Mounting Tabs
- 2001-1 Wire-in Bridge Rectifier
- 150 Strike Latch Guard
- 2005M3 SMART Pac® III
- 2001M Plug-in Bridge Rectifier
- 2004M ElectroLynx® adapter
- 2006M Plug-in Buzzer



Grade 1



SecuriCare
Warranty



Cylindrical
Locksets



Mortise Locks
without
Deadbolt



PoE
Friendly



Fire Rated



Burglary
Rated

hes

ASSA ABLOY

Folger Adam 700 Electric Strike

Certifications

- ANSI/BHMA A156.31, Grade 1
- RoHS Compliant
- UL 10C Fire Rated
- UL 294 Listed
- UL 1034 Burglary-Resistant Listed

Specifications

Electrical

- 290 mA at 12VDC continuous duty
- 150 mA at 24VDC continuous duty
- PoE friendly

Dimensions



712

For use with 1/2" [12.7mm] to 5/8" [15.9mm] throw latchbolts in hollow metal frame applications.
1/2" [12.7mm]
Keeper standard



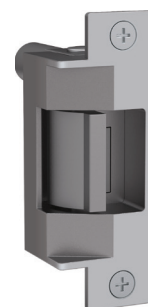
712-75

For use with 1/2" [12.7mm]*, 5/8" [15.9mm]* or 3/4" [19mm] throw latchbolts in hollow-metal frame applications.
3/4" [19mm]
Keeper standard



732

For use with 1/2" [12.7mm]* to 5/8" [15.9mm]* throw latchbolts in wood frame applications. Features an offset solenoid.
1/2" [12.7mm]
Keeper standard



732-75

For use with 1/2" [12.7mm]*, 5/8" [15.9mm]* or 3/4" [19mm] throw latchbolts in wood frame applications. Features an offset solenoid.
3/4" [19mm]
Keeper standard

*NOTE: When using LBMLCM with a 1/2" [12.7mm] or 5/8" [15.9mm] keeper latchbolt, detection may be dependent on the door gap.

How to Order

SERIES	FAIL SECURE / SAFE	VOLTAGE	FINISH	OPTION (S)
712	- F	- 24D	- 630	- LBMLCM
COMPLETE PACS	(blank) Fail Secure (standard)	12D 12 Volt 24D 24 Volt	605 Bright Brass 606 Satin Brass 612 Satin Bronze 613E Dark Oxidized Satin Bronze Powder 629 Bright Stainless Steel 630 Satin Stainless Steel	(blank) No Monitor LBMLCM Latchbolt & locking cam monitor
712 1/2" keeper standard; hollow metal frames, for up to a 5/8" throw latchbolt	F Fail Safe			
712-75 3/4" keeper standard; hollow metal frames, for up to a 3/4" throw latchbolt without deadbolt				
732 1/2" keeper standard; wood frames, for up to a 5/8" throw latchbolt				
732-75 3/4" keeper standard; wood frames, for up to a 3/4" throw latchbolt without deadbolt				

SERIES	FINISH
712	- 630
FACEPLATE ONLY	605 Bright Brass
FP Faceplate	606 Satin Brass
712 1/2" keeper standard; hollow metal frames, for up to a 5/8" throw latchbolt	612 Satin Bronze
712-75 3/4" keeper standard; hollow metal frames, for up to a 3/4" throw latchbolt without deadbolt	613E Dark Oxidized Satin Bronze Powder
732 1/2" keeper standard; wood frames, for up to a 5/8" throw latchbolt	629 Bright Stainless Steel
732-75 3/4" keeper standard; wood frames, for up to a 3/4" throw latchbolt without deadbolt	630 Satin Stainless Steel

NOTE: Electric strike compatibility is determined at time of electric strike product release. ASSA ABLOY is not responsible for incompatibility of products that have changed in design or craftsmanship by their respective manufacturers. When compatibility is a concern, contact Customer Support for application assistance.