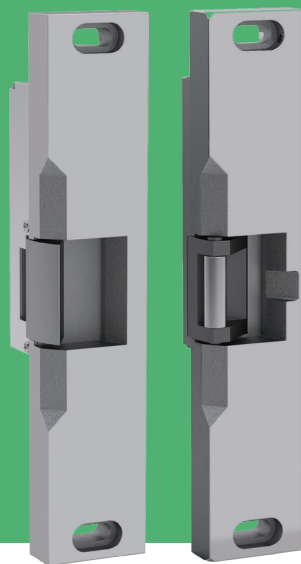


Folger Adam 310-4 Electric Strike

*Works with Pullman style
latchbolts up to 3/4" and
Squarebolt® style rim exit devices*



The 3 hour fire-rated, industrial grade electric strike designed for extreme heavy duty applications.

The all stainless steel construction of the 310-4 Series makes it ideal for high abuse applications that would disable other electric strikes. The Folger Adam 310-4 Series has a unique 3/4" face plate with an integrated 1/4" base shim that can be removed in the field to accommodate rim exit devices with a 1/2" or 3/4" throw latchbolt.

Features

- Integrated shim for quick customization of faceplate thickness (1/2" to 3/4")
- Tamper resistant, heavy duty construction
- Constructed entirely of stainless steel for strength and corrosion resistance
- Static strength 1,500 lbs
- Dynamic strength 70 ft-lbs
- Endurance rating 1,000,000 cycles
- Integrated ramps for better deadlatch handling
- Set screws for horizontal lockdown
- In-frame horizontal adjustability
- Wider faceplate (1-3/4") for greater versatility
- Non-handed
- Fail secure (Standard)
- Plug-in connector
- SecuriCare five-year, no-fault, no questions asked warranty (Addition of SMART Pac® III extends the warranty to 10 years)

Options

- Fail Safe
- LCBMA - Latchbolt & Locking Cam Monitor with Auxiliary Switch

Accessories

- **2001-1** Wire-in Bridge Rectifier
- **SMB: Surface Mounting Box** Surface mounting box (783S and 789S options)
- **2005M3** SMART Pac® III
- **2001M** Plug-in Bridge Rectifier
- **2004M** ElectroLynx® adapter
- **2006M** Plug-in Buzzer



Grade 1



SecuriCare
Warranty



Rim Exit
Devices



Fire Rated



Burglary
Rated



ASSA ABLOY

Folger Adam 310-4 Electric Strike

Certifications

- ANSI/BHMA A156.31, Grade 1
- RoHS Compliant
- UL 10C Fire-Rated, 3 Hour Single Door [Fail Secure Only]
- UL 294 Listed
- UL 1034 Burglary-Resistant Listed

Specifications

Electrical

- 510 mA at 12VDC continuous duty
- 250 mA at 24VDC continuous duty

310-4

For up to 3/4" [19mm] Pullman style latchbolts on single doors

PK keeper standard

310-4S

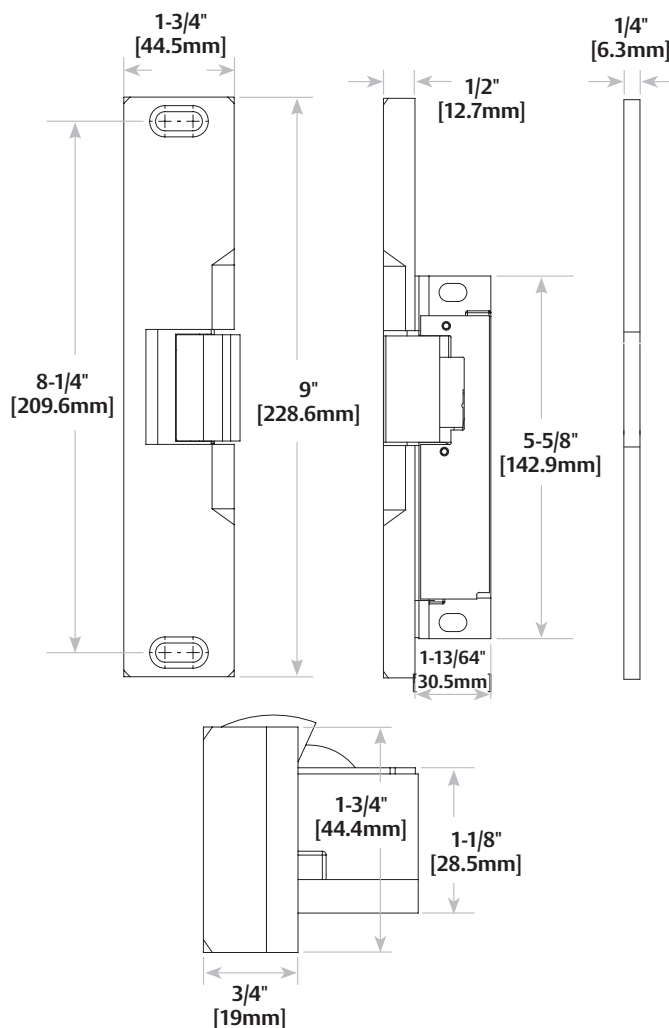
For Squarebolt® style rim exit devices such as;

- Corbin Russwin® ED4200S, ED5200S and ED5200SA SecureBolt®
- ASSA ABLOY ACCENTRA™* 7150(F), 7250, 7270M(F) Squarebolt® Exit Devices

SK keeper standard

Dimensions

Model 310-4 shown



How to Order

SERIES	FAIL SECURE / SAFE	VOLTAGE	FINISH	OPTION (S)
310-4 (S)	- F	- 12D	- 605	- LCBMA
COMPLETE PACS	(blank) Fail Secure (standard)	12D 12 Volt	605 Bright Brass	(blank) No Monitor
310-4 PK keeper standard; For use with 3/4" Pullman style latchbolts	F Fail Safe	24D 24 Volt	606 Satin Brass	LCBMA* Latchbolt & locking cam monitor with auxiliary switch
310-4(S) SK keeper standard; For use with Squarebolt® style rim exit devices			612 Satin Bronze	
			613E Dark Oxidized Satin Bronze Powder	
			629 Bright Stainless Steel	
			630 Satin Stainless Steel	

PREFIX	SERIES	KEEPER STYLE	FINISH
FP	- 310-4	(SK)	- 605
FACEPLATE ONLY		SK For use with Squarebolt® style rim exit devices	605 Bright Brass
FP Faceplate	310-4 PK keeper standard; For use with 3/4" Pullman style latchbolts		606 Satin Brass
	310-4(S) SK keeper standard; For use with Squarebolt® style rim exit devices		612 Satin Bronze
			613E Dark Oxidized Satin Bronze Powder
			629 Bright Stainless Steel
			630 Satin Stainless Steel

NOTE: Electric strike compatibility is determined at time of electric strike product release. ASSA ABLOY is not responsible for incompatibility of products that have changed in design or craftsmanship by their respective manufacturers. When compatibility is a concern, contact Customer Support for application assistance.