

KS-M Mechanical Server Cabinet Lock



ASSA ABLOY

Installation & Operating Instructions

Experience a safer
and more open world

Operation

To unlock the KS-M Server Cabinet Lock, insert a key into the SFIC (Small Format Interchangeable Core) cylinder mounted in the KS-M handle. Rotate key to unlock the handle. Pull on the bottom of the handle to lift it out of the lock body and away from its nested and locked position. Once clear of the lock body, rotate the handle either left or right to unlock the server door.

Specifications

- **Lock Prep** 150 x 25 mm
- **Locking Type** Cam Activated
- **Holding Force** 350 lbs
- **Mechanical Key Override**
SFIC 6 or 7-Pin (Sold Separately)

Environmental

- 32° to 122°F [-10° to 50°C]
- Weather Resistance Tested to meet IP54
- Indoor Use Only

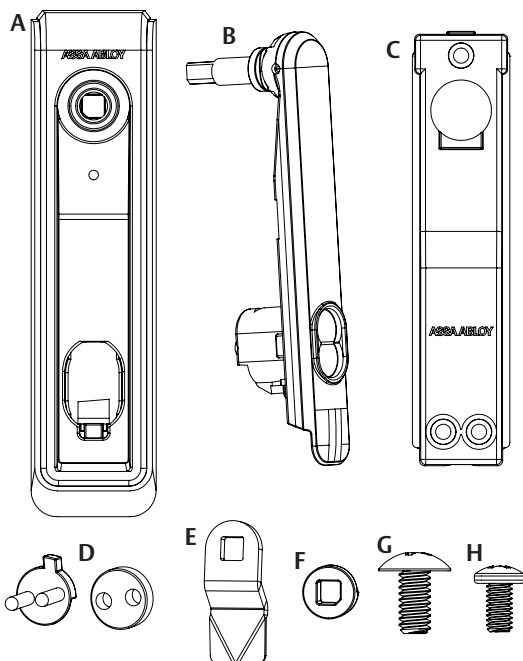
Certification & Listings

- RoHS Compliant

Product Contents

- A** KS-M Lock Body
- B** KS SFIC Handle
- C** Rear Mounting Bracket
- D** SFIC Cam & Spacer
- E** Locking Cam
- F** Handing Selector
- G** Screw (1) #1/4-20 x 1/2"
Truss Head Phillips
- H** Screw (3) #8/32 x 1/4"
Pan Head Phillips

Diagram 1 Product Components



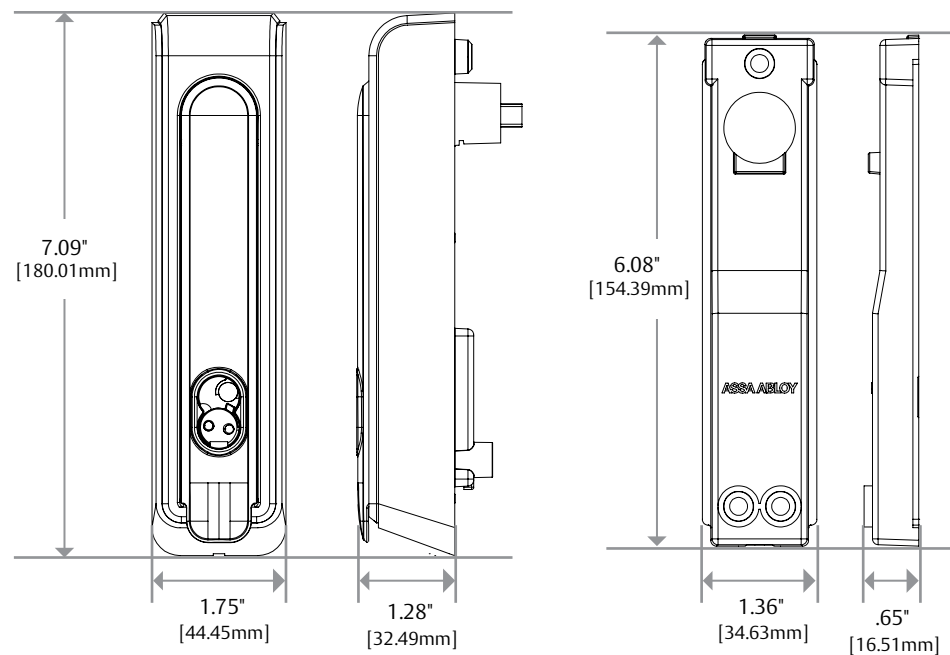
Recommended Tools

- Cutting Wheel (As Required)
- Phillips #2 Screwdriver



WARNING: This product can expose you to chemicals including lead, which is known to the State of California to cause cancer and birth defects or other reproductive harm. For more information go to P65Warning.ca.gov.

Diagram 2 Product Dimensions



Mounting

1. LOCATE the 150 x 25 mm lock cutout on the door, **Diagram 3**.
2. ENSURE lock body is flush against the mounting surface. ATTACH rear mounting bracket (C) to lock body (A) using (3) pan head mounting screws (H), **Diagram 4**.
3. INSTALL handle (B), handing selector (F), and cam (E). Secure with (G) truss head screw, **Diagram 5**.

NOTE: RE-USE existing cam when possible.

Diagram 3 Locate cutout

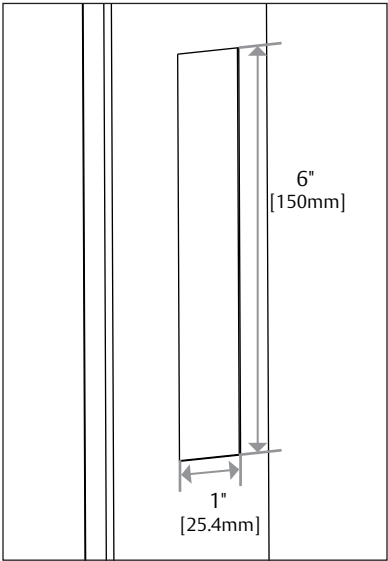


Diagram 4 Ensure lock body is flush

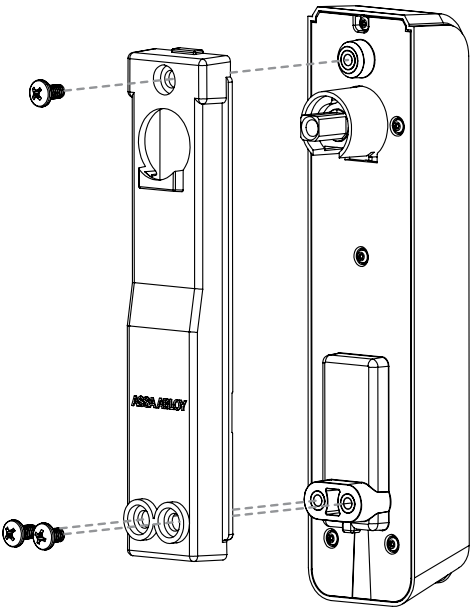
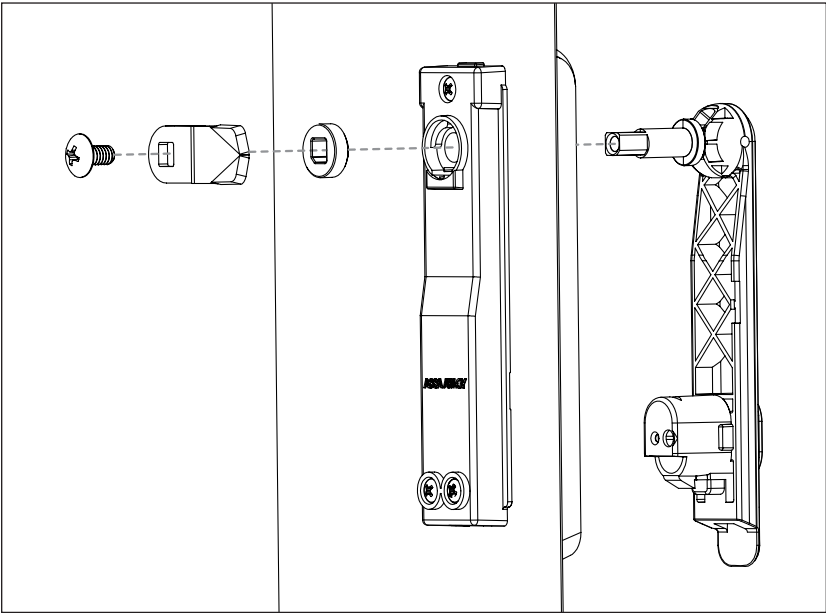


Diagram 5 Install handle

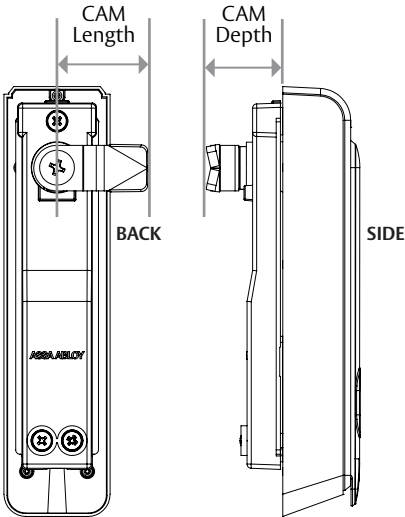


Cam Selection

NOTE: RE-USE existing cam when possible.

PART NO.	CAM	CAMLLENGTH	CAM DEPTH
Included	38mm – 4 (standard)	1-1/2" [38mm]	1" [25.4mm]
KS-CAM38	38mm – 5 (optional)	1-1/2" [38mm]	1-1/10" [28mm]
KS-CAM45	45mm – 1 (optional)	1-3/4" [45mm]	7/10" [18mm]

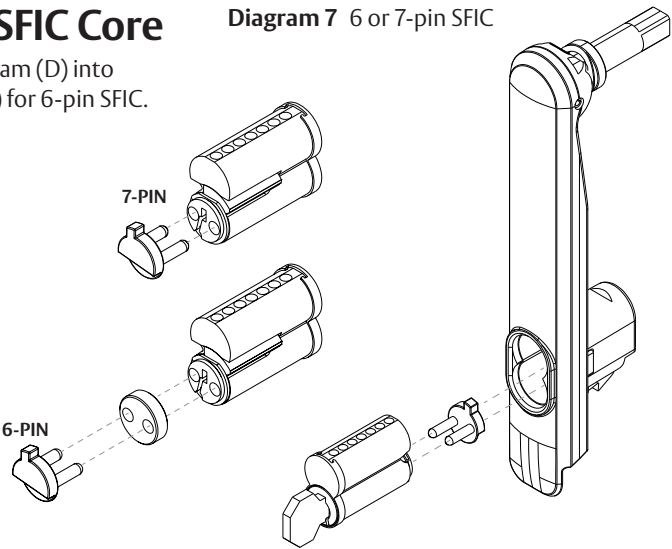
Diagram 6 Cam Length



Installing the SFIC Core

1. INSERT SFIC core and cam (D) into handle. Use spacer (D) for 6-pin SFIC.

Diagram 7 6 or 7-pin SFIC



Warranty

For information on warranty coverage and replacement options, please visit hesinnovations.com/warranty.

Printed in the U.S.

Patent pending and/or patent
www.assaabloydss.com/patents

Copyright © 2021, Hanchett Entry Systems, Inc., an ASSA ABLOY Group company. All rights reserved. Reproduction in whole or in part without the express written permission of Hanchett Entry Systems, Inc. is prohibited. 3080006.026_1



ASSA ABLOY

techsupport.hes@assaabloy.com
800 626 7590 | hesinnovations.com
10027 S. 51st Street, Ste. 102
Phoenix, AZ 85044 USA