

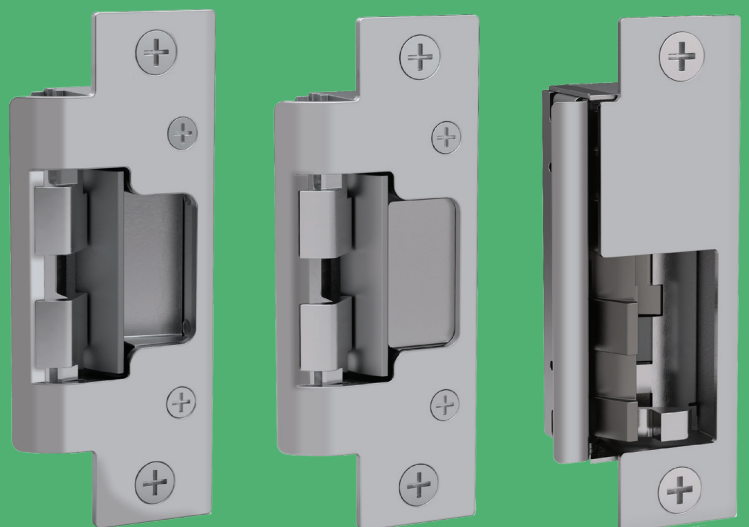
h.e.s.

ASSA ABLOY

# 8000 Series No-Cut Electric Strikes

Retrofit solutions to electrify  
cylindrical and mortise locksets

Experience a safer  
and more open world



# The 8000 Series offers compact, high performance electric strikes featuring a unique concealed design for cylindrical or mortise locksets.

No cutting on the frame is required, which means less time spent installing the strike. Simply remove the existing strike plate, adjust the vertical alignment to the latchbolt centerline, and install.

Ideal for aluminum, wood and hollow metal applications in office spaces, interior entries, stairwells, and other openings requiring electronic access control.

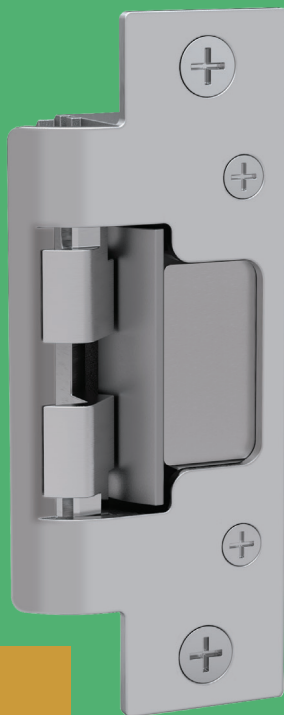


## 8000

Works with Cylindrical Locksets up to a 5/8" Throw Latchbolt



Cylindrical Locksets



## 8300

Works with Cylindrical Locksets up to a 5/8" Throw Latchbolt



Cylindrical Locksets



Fire Rated



## 8500

Works with Mortise Locksets without a Deadbolt up to 3/4" Throw Latchbolt  
Full pocket shims for horizontal adjustment



Mortise Locks without Deadbolt



Fire Rated

## Saves Time

- No cutting in to the face of the frame
- Accommodates door sag with patented vertical adjustability

## Concealed Design

- Fits in standard ANSI prep
- Completely concealed in frame
- Available in seven finishes



# Specifications for all 8000 Family Strikes

## Certifications

- ANSI/BHMA, A156.31 Grade 1
- UL 1034 burglary-resistant listed and suitable for outdoor use
- UL 294 listed
- RoHS Compliant

## Electrical (DC Continuous Duty)

- Dual voltage 12/24 VDC
- 240 mA at 12VDC
- 120 mA at 24 VDC

## Features

- No cutting required
- Vertical adjustability to accommodate door sag and misalignment
- Tamper resistant
- Non-handed
- Internally mounted solenoid
- SecuriCare five-year, no-fault, no questions asked warranty
- Addition of SMART Pac® III extends warranty to 10 years



Grade 1



SecuriCare  
Warranty



Field Selectable  
(Fail secure /Fail safe)



Dual Voltage  
12/24



PoE  
Friendly



Outdoor  
Rated



Burglary  
Rated

		8000	8300	8500	COMPETITOR
					
FRAME APPLICATION	Hollow Metal	✓	✓	✓	✓
	Wood	✓	✓		✓
	Aluminum	✓	✓		
	No-Cut	✓	✓	✓	✓
	Vertical adjustment	✓	✓		
	Horizontal Adjustment			✓	
	Cylindrical Locksets	✓	✓		✓
Mortise Locksets			✓		
HOLDING FORCE	Static Strength 1,500 lbs	✓	✓	✓	✓
	Dynamic Strength 70 ft-lbs	✓	✓	✓	✓
ELECTRICAL	12 VDC Current Draw	240 mA	240 mA	240 mA	300 mA
	24 VDC Current Draw	120 mA	240 mA	240 mA	150 mA
	Dual Voltage 12/24 VDC Continuous Duty	✓	✓	✓	✓
	Field Selectable (Fail Secure/Fail Safe)	✓	✓	✓	✓
SPECIFICATIONS	UL1034 Burglary Resistant Listed (Indoor)	✓	✓	✓	✓
	UL1034 Burglary Resistant Listed (Outdoor)	✓	✓	✓	
	UL 294 Listed	✓	✓	✓	✓
	UL 10C Fire rated – Class A, 3 Hour Single Door		✓	✓	
	RoHS Compliant	✓	✓	✓	
	Cycle Testing	1M	1M	1M	250,000
	Finish Options	7	7	7	1
	Monitoring Type	Latchbolt Status Only	Latchbolt Status Only	Latchbolt & Strike Status	Latchbolt Only
	Warranty	Five-year no questions asked	Five-year no questions asked	Five-year no questions asked	One-year limited



# How to Order

Series	Model	Finish*	Option (s)
<b>8000</b>	—	<b>— 630</b>	<b>— LBM</b>
<b>8000</b>	<b>C*</b> Complete Electric Strike; Includes the 801 and 801A faceplates	<b>605</b> Bright Brass	<b>LBM</b> Latchbolt Monitor
<b>8300</b>		<b>606</b> Satin Brass	
		<b>612</b> Satin Bronze	
		<b>613</b> Bronze Toned	
		<b>629</b> Bright Stainless Steel	
		<b>630</b> Satin Stainless Steel	
<b>BLK</b> Black			
<b>8500</b>		<b>605</b> Bright Brass	<b>LBM</b> Latchbolt Monitor
		<b>606</b> Satin Brass	
		<b>612</b> Satin Bronze	<b>LBSM</b> Latchbolt & Strike Monitor
		<b>613</b> Bronze Toned	
		<b>629</b> Bright Stainless Steel	
<b>630</b> Satin Stainless Steel			

\*Complete Pacs are only available in the 630 finish



**ASSA ABLOY**

## USA

800 626 7590 | [hesinnovations.com](https://hesinnovations.com)

[customerservice.hes@hesinnovations.com](mailto:customerservice.hes@hesinnovations.com) | [techsupport.hes@assaabloy.com](mailto:techsupport.hes@assaabloy.com) | [orders.hes@assaabloy.com](mailto:orders.hes@assaabloy.com)

## CANADA

800 461 3007 | [assaabloydss.ca](https://assaabloydss.ca)

[sales.dss.ca@assaabloy.com](mailto:sales.dss.ca@assaabloy.com) | [orders.dss.ca@assaabloy.com](mailto:orders.dss.ca@assaabloy.com)

Printed in the U.S.A.

Patent pending and/or patent [www.assaabloydss.com/patents](https://www.assaabloydss.com/patents)

Copyright © 2022, Hanchett Entry Systems, Inc., an ASSA ABLOY Group company. All rights reserved. Reproduction in whole or in part without the express written permission of Hanchett Entry Systems, Inc. is prohibited. HES-088-1221

The ASSA ABLOY Group is the global leader in access solutions. Every day we help people feel safe, secure and experience a more open world.