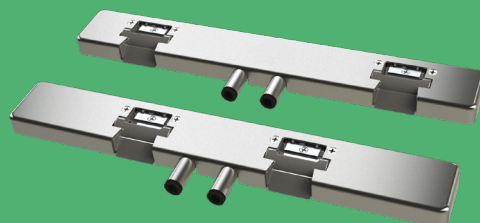
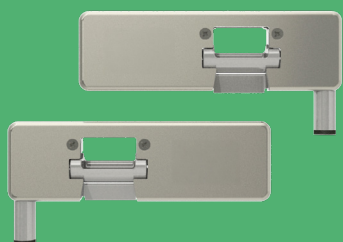
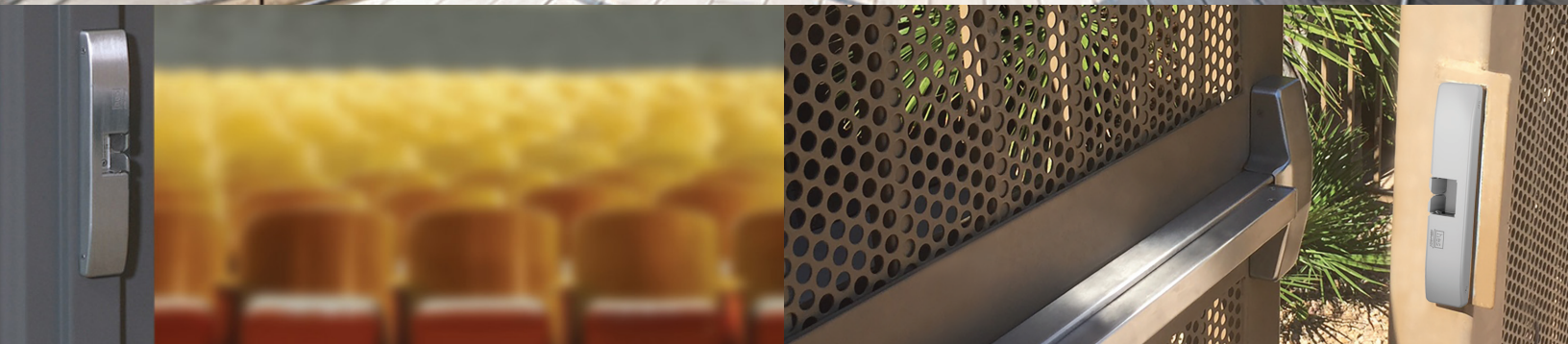


# 9000 Family Surface Mounted Electric Strikes

Electric Strikes for Every Exit Device



Experience a safer  
and more open world



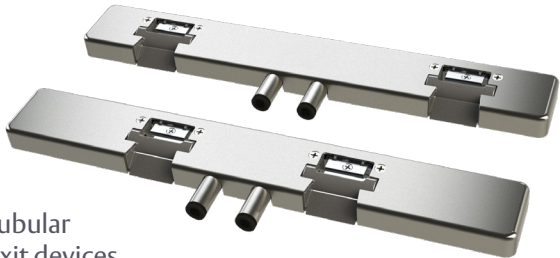
# Works with Tubular Vertical Rod Exit Devices



**9100**  
Works with tubular vertical rod exit devices on single glass doors



**9200**  
Works with tubular vertical rod exit devices on double glass doors



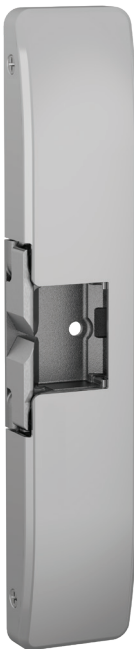
# Works with Rim Exit Devices



**9400**  
Works with rim exit devices up to 1/2" throw latchbolt



**9500**  
Works with rim exit devices up to 3/4" throw latchbolt



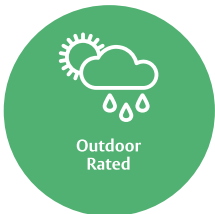
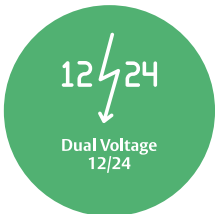
**9600**  
Works with rim exit devices up to 3/4" throw latchbolt



**9700**  
Works with Corbin Russwin SecureBolt® and ASSA ABLOY ACCENTRA Squarebolt® exit devices



**9800**  
Works with Adams Rite Starwheel and Interlocking rim exit devices



# Specifications

## Certifications

- ANSI/BHMA, A156.31 Grade 1
- UL 1034 burglary-resistant listed and suitable for outdoor use
- UL 294 listed
- UL 305 listed
- RoHS Compliant

## Electrical (DC Continuous Duty)

- Dual voltage 12/24 VDC
- 450 mA at 12VDC/250 mA at 24 VDC

## Features

- Adjustable for precise alignment and optimal performance
- ElectroLynx™ plug-in connectors
- No cutting required
- Stainless steel construction
- Patented magnetic debris protection
- SecuriCare five-year no-fault, no questions asked warranty (Addition of SMART Pac® III extends warranty to 10 years)



# Options & Accessories

- **LM, LBM** Latchbolt Monitor (detects when latchbolt is in a locked state)
- **LMS, LBSM** Latchbolt Strike Monitor (detects when latchbolt and strike are in a locked state)
- **2005M3** SMART Pac® III
- **SMB** Surface Mounting Box
- **9000-MTK** Metal Template Kit (for 9400, 9500, 9600, 9700, 9800)
- **9000-108-XXX** 1/8" Spacer Plate (available in 613E, 628E, 630 & BSP Finishes)
- **9000-116-XXX** 1/16" Spacer Plate (available in 613E, 628E, 630 & BSP Finishes)



# How to Order

SERIES	DESCRIPTION	HANDING (9100) / KEEPER SPACING (9200)	FINISH	OPTIONS
<b>9200</b>		<b>W</b>	<b>-630</b>	<b>-LBM</b>
<b>9100</b>	For tubular, vertical rod exit devices, single glass doors	<b>L</b> Left Hand/Right Hand Reverse <b>R</b> Right Hand/Left Hand Reverse	<b>605</b> Bright Brass <b>606</b> Satin Brass <b>612</b> Satin Bronze <b>613E</b> Dark Oxidized Satin Bronze	<b>(blank)</b> No Monitoring <b>LM</b> Latchbolt Monitoring <b>LMS</b> Latchbolt and Strike Monitoring
<b>9200</b>	For tubular, vertical rod exit devices, double glass doors	<b>N</b> 4-5/8" <b>W</b> 8-3/8"	<b>629</b> Bright Stainless Steel <b>630</b> Satin Stainless Steel <b>BSP</b> Black Suede Powder	
SERIES	DESCRIPTION	(BLANK)	FINISH	OPTIONS
<b>9200</b>			<b>-630</b>	<b>-LBM</b>
<b>9400</b>	For 1/2" Pullman Exit Device		<b>605</b> Bright Brass	<b>(blank)</b> No Monitoring
<b>9500</b>	For 3/4" Pullman Exit Device, fire-rated		<b>606</b> Satin Brass	<b>LBM</b> Latchbolt Monitoring
<b>9600</b>	For 3/4" Pullman Exit Device, NON fire-rated		<b>612</b> Satin Bronze <b>613E</b> Dark Oxidized Satin Bronze <i>Only Available on 9800</i>	<b>LBMS</b> Latchbolt and Strike Monitoring
<b>9700</b>	For SecureBolt®/ SquareBolt® Exit Device		<b>628E</b> Satin Aluminum Powder*	
<b>9800</b>	For Starwheel Exit Device		<b>629</b> Bright Stainless Steel <b>630</b> Satin Stainless Steel <b>BSP</b> Black Suede Powder	



		Tubular Vertical Rod		1/2" Pullman		Fire Rated 3/4" Pullman		3/4" Pullman	SecureBolt® / SquareBolt®		Starwheel / Interlock
		9100/9200	COMPETITOR	9400	COMPETITOR	9500	COMPETITOR	9600	9700	COMPETITOR	9800
FRAME PREPARATION	Hollow Metal & Wood	●	●	●	●	●	●	●	●	●	●
	Aluminum	●	●	●	●	●		●	●		●
	Standard "Fin" Latch	●									
	Roller Latch	●	●								
	Vertical Adjustment	●									
	Horizontal Adjustment	●	●								
	Surface Mounted—No Cutting Required	●	●	●	●	●	●	●	●	●	●
	1/2" Pullman Rim Exit Devices			●	●						
	3/4" Pullman Rim Exit Devices			●	●	●	●	●			
	Securebolt & Squarebolt Rim Exit Devices								●	●	
	Adams Rite Starwheel & Interlocking Rim Exit Devices										●
	Installation Template			●	●	●	●	●	●	●	●
FORCE	Static Strength (lbs)	1,500		1,500	1,500	1,500	3,000†	2,000	2,000	1,500†	1,500
	Dynamic Strength (lbs)	70-ft		70-ft		70-ft		120-ft	120-ft		70-ft
ELECTRICAL	12 VDC Current Draw (mA)	9100 = 240 9200 = 480	Single = 450 Double = 900	450	500	450	566	450	450	566	450
	24 VDC Current Draw (mA)	9100 = 120 9200 = 240	Single = 225 Double = 450	250	255	250	253	250	250	253	250
	Dual Voltage 12/24 VDC Continuous Duty	●	●	●	11 to 28V AC/DC			●	●	11 to 28V AC/DC	●
	Field Selectable (Fail Secure/Fail Safe)	●		●	●			●	●	●	●
CERTIFICATIONS*	ANSI/BHMA A156.31 Grade I	●									
	UL 1034 Burglary-Resistant Listed (Indoor)	●	●	●		●		●	●		●
	UL 1034 Burglary-Resistant Listed (Outdoor)	●		●		●		●	●		●
	UL 294 Listed	●	●	●		●		●	●		●
	UL 305 Listed			●		●		●	●		●
	UL 10C Fire Rated — Class A, 3 Hour Single Door					●	●		●		
	Windstorm Resistant							●	●		
	RoHS Compliant	●	●	●				●	●		●
SPECIFICATIONS	Cycle Testing	1M	250,000	1M	1M	1M	1.5M	1M	1M		1M
	Finish Options	8	1	8	6	7	6	8	7	6	7
	Monitoring—Latchbolt Status	●		●	●	●	●	●	●	●	●
	Monitoring—Strike Status	●		●		●		●	●		●
	Monitoring—Factory Configured (FC) or Field Installable (FI)	FC/FI		FC	FC	FC	FC	FC	FC	FC	FC
	Warranty (years)**	5	5 Limited	5	2	5	2	5	5	2	5
	Construction	Stainless Steel		Stainless Steel		Stainless Steel		Stainless Steel	Stainless Steel		Stainless Steel

\*Requires additional frame drilling and mounting pins to meet strength; Not 3rd party verified. \*Visit product detail pages for complete list of certifications.

\*\*HES Warranty is 5 Years "No Questions Asked", extended to 10 Years "No Fault" when installed with a Smart Pac® III.



**ASSA ABLOY**

The ASSA ABLOY Group is the global leader in access solutions. Every day we help people feel safe, secure and experience a more open world.

**USA**

800 626 7590 | [hesinnovations.com](https://hesinnovations.com)

[customerservice.hes@hesinnovations.com](mailto:customerservice.hes@hesinnovations.com) | [techsupport.hes@assaabloy.com](mailto:techsupport.hes@assaabloy.com) | [orders.hes@assaabloy.com](mailto:orders.hes@assaabloy.com)

**CANADA**

800 461 3007 | [assaabloydss.ca](https://assaabloydss.ca)

[sales.dss.ca@assaabloy.com](mailto:sales.dss.ca@assaabloy.com) | [orders.dss.ca@assaabloy.com](mailto:orders.dss.ca@assaabloy.com)

Printed in the U.S.A. Patent pending and/or patent [www.assaabloydss.com/patents](https://www.assaabloydss.com/patents)

Copyright © 2025, Hanchett Entry Systems, Inc., an ASSA ABLOY Group company. All rights reserved. Reproduction in whole or in part without the express written permission of Hanchett Entry Systems, Inc. is prohibited. HES-089-0625