

# Folger Adam 700 Series Electric Strike



**ASSA ABLOY**

Experience a safer  
and more open world

## Installation Instructions

### Product Components

- A** Electric Strike Body & Faceplate
- B** #12-24 Mounting Screws
- C** #8-32 Body Mounting Screws
- D** #12 x 2 1/2" Wood Faceplate Mounting Screws
- E** Plug In Connector
- F** Deadlatch Tabs (742-75 only)
- G** #6-32 x 5/16" Deadlatch Tabs Screws (742-75 only)
- H** Keeper Shim (742-75 only)
- I** #6-32 x 3/16" Keeper Shim Screws (742-75 only)

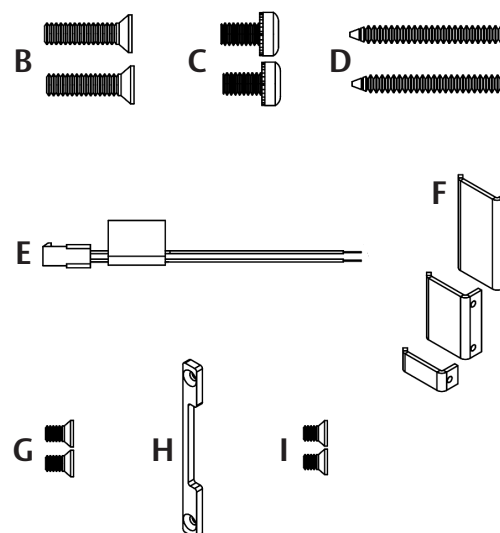
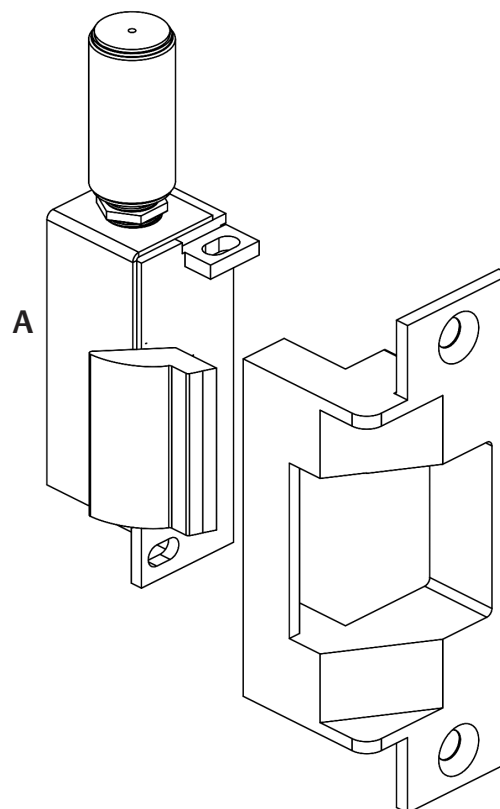
### Electrical Specifications

Electrical Ratings for Solenoid	Continuous Duty	
Voltage	12 VDC	24 VDC
Resistance in Ohms	41	160
Amps	.29	.15

*Solenoids are rated at +/- 10% indicated value.*

Minimum Wire Gauge Requirements	Continuous Duty	
Voltage	12 VDC	24 VDC
200 feet or less	18 guage	20 guage
200-300 feet	16 guage	18 guage
300-400 feet	14 guage	16 guage

*Lengths based on round trip.*



# Installation



**WARNING:** Before connecting any device at the installation site, verify input voltage using a multimeter. Many power supplies and low voltage transformers operate at higher levels than listed. Any input voltage exceeding 10% of the solenoid rating may cause severe damage to the unit. Installation wiring for the product and wiring methods shall be in accordance with the National Electrical Code, ANSI/NFPA 70.

## Preparing the Strike

The strike body ships as either a 12 or 24 volt unit and is not field selectable.

For 12 VAC, 12 VDC, or 16 VAC, the Plug In Connector (pigtail) marked "12 VDC" should be used; for 24VAC or 24 VDC, the pigtail marked "24 VDC" should be used.

- 1 ATTACH the faceplate to the strike body using the #8-32 Body Mounting screws as illustrated (see page 3) Diagram 2.
- 2 IF using the LCBLCM (Latchbolt & Locking Cam Monitor), see Diagram 1 for wiring instructions.
- 3 VERIFY the available voltage is +/- 10% of the rated voltage of the strike body.

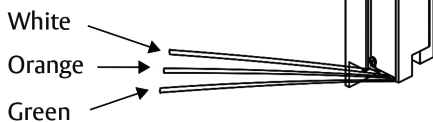
## Wiring

Diagram 1: Latchbolt Monitor (LBM)	
White	Common
Orange	Normally Open
Green	Normally Closed

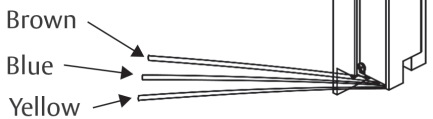
Diagram 1a: Locking Cam Monitor (LCM)	
Brown	Common
Blue	Normally Open
Yellow	Normally Closed

**NOTE:** The state of switch is listed for an unpowered strike and LBM in unactuated (door open) position.

**Diagram1:**  
Latchbolt Monitor



**Diagram1a:**  
Locking Cam Monitor



## Finishing the Installation

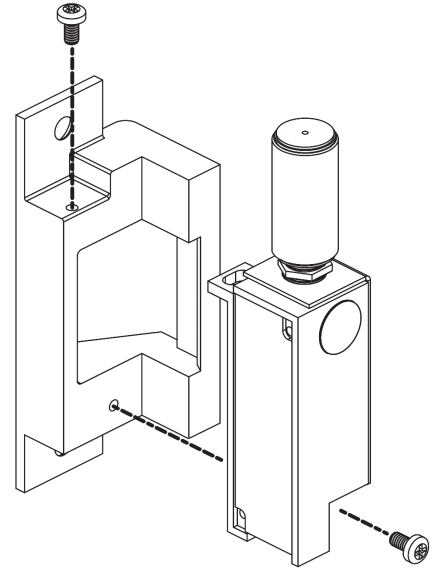
- 1 CONNECT the Plug In Connector to the electric strike, and connect wires from the Plug In Connector leads to the power source.
- 2 INSTALL the electric strike unit in jamb cutout, using the #12-24 x 1/2" faceplate mounting screws for metal applications, or using the #12 x 2-1/2 wood screws for wood applications.

## Faceplate Attachment

To install the 700 series electric strike body to the faceplate, install two #8-32 Body Mounting screws as shown. Make sure bolts are tightened and secured as shown in Diagram 2.

Keeper position can be adjusted by loosening the #8-32 body mounting screws, and repositioning the strike body as needed. Retighten body mounting screws after adjustment is made.

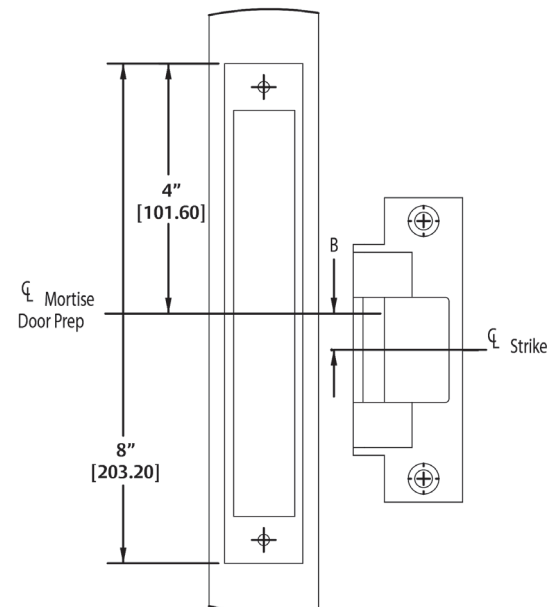
**Diagram 2:** Faceplate Attachment



**Diagram 3:** Determining Mortise Offset

## Determining the Offset

Diagram 3: Determining Mortise Offset	
Mortise Lock	B
Corbin/Russwin Arrow and Falcon	0"
Best 34H-37H	1/4"
Sargent (8200) and ASSA ABLOY ACCENTRA™ 8800 (formerly Yale Commercial)	3/16"
Schlage	3/4"
ASSA ABLOY ACCENTRA™ 8700 (formerly Yale Commercial)	7/8"
Best 45H-47H (recommended for use with 742-75 only).	1/8"



## Preparing the Frame

Method of install may vary per door and frame manufacturer.

If using a mortise lockset, calculate offset using Diagram 4.

- 1 PREPARE frame using the template for your strike (see page 4).  
If using the 742-75, reference Diagram 5 to install the Deadlatch Tab and Keeper Shim.  
Note: Drawing shows only one shim.

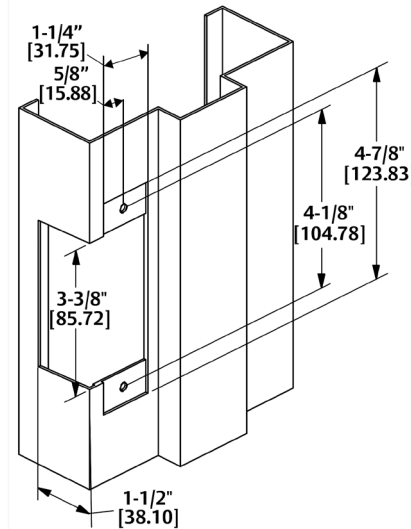
- 2 IF additional horizontal adjustment is needed, install the keeper shim using the #6-32 x 3/16" keeper shims screws as illustrated in Diagram 6.

- 3 Several deadlatch tabs are included for use with the 742-75.

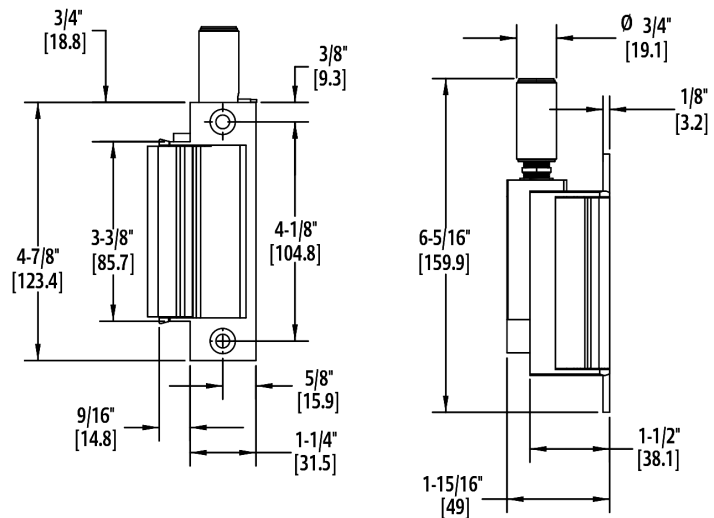
CHOOSE and position the deadlatch tab so that the deadlatch is depressed when the door is closed, while staying clear of the latchbolt.

- 4 INSTALL the deadlatch tab using the #6-32 x 5/16" deadlatch tab screws as illustrated in Diagram 7.

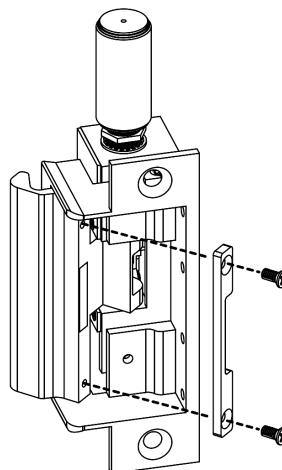
**Diagram 4:** Frame Dimensions



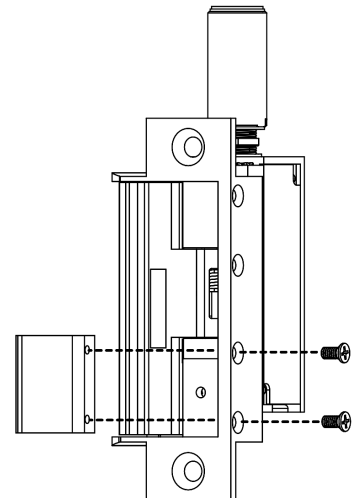
**Diagram 5:** 742-75 Template & Dimensions (RHRB Application Shown)



**Diagram 6:**  
Horizontal Adjustment



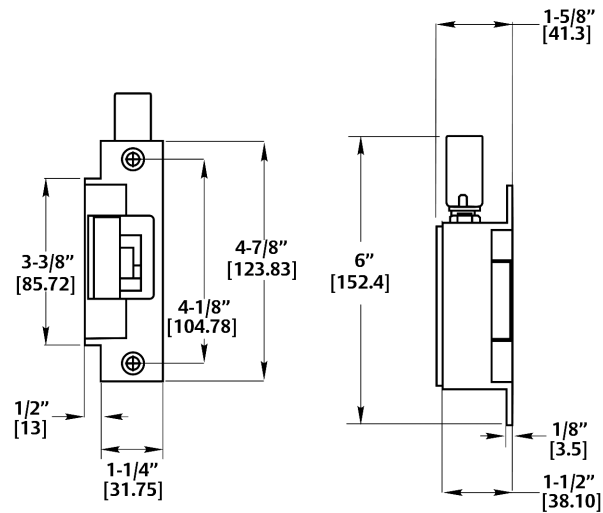
**Diagram 7:**  
Deadlatch Tab



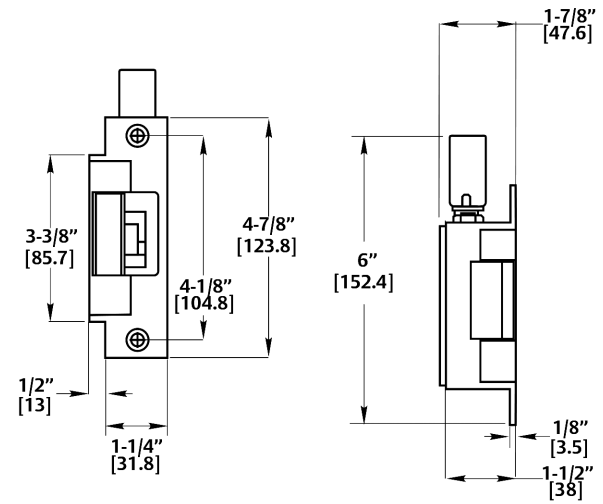
# Cutout Templates

Inches [Millimeters]

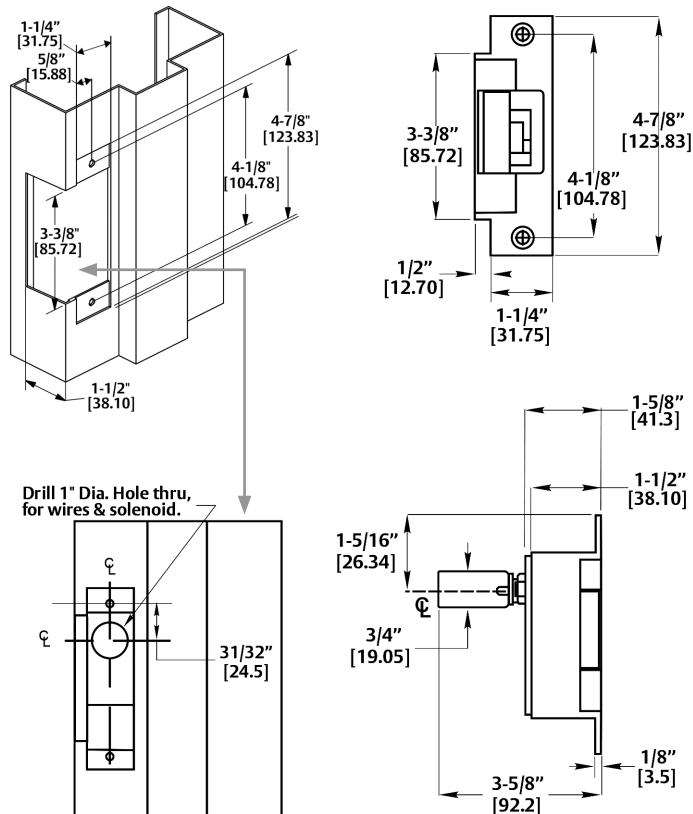
## 712 Template & Dimensions



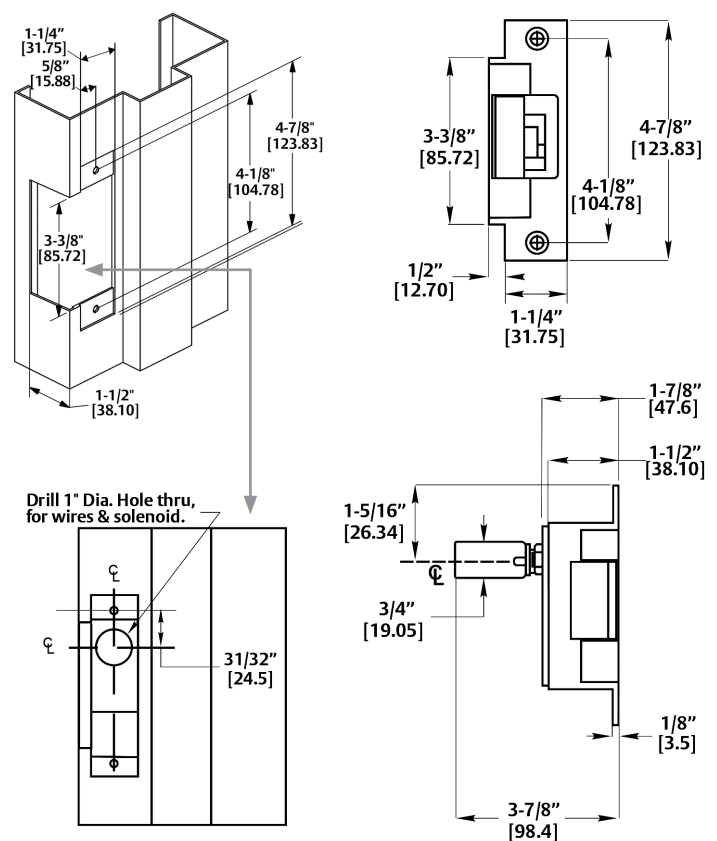
## 712-75 Template & Dimensions



## 732 Template & Dimensions



## 732-75 Template & Dimensions



**Warranty** For information on warranty coverage and replacement options, please visit [hesinnovations.com/warranty](https://hesinnovations.com/warranty)



techsupport.hes@assaabloy.com  
hesinnovations.com | 800 626 7590

Printed in the U.S.A.  
Patent pending and/or patent [www.assaabloydss.com/patents](https://www.assaabloydss.com/patents)  
Copyright © 2024, Hanchett Entry Systems, Inc., an ASSA ABLOY Group company.  
All rights reserved. Reproduction in whole or in part without the express written permission of Hanchett Entry Systems, Inc. is prohibited. 3831006.001\_6