

5300 Series Electric Strike

*Works with cylindrical locksets
up to a 5/8" throw latchbolt*

Also available in
Complete One Box
Solution



The Grade 1, fire-rated, low-profile solution for cylindrical locksets.

The HES 5300 Series Electric Strike is a fire-rated compact, high performance electric strike designed for low profile openings where there is limited space behind the jamb. Its strength is derived from a unique keeper pin locking design, enabling the 5300 to exceed the ratings of the frame, door and locking hardware. This field selectable fail safe/fail secure unit is easy to install and accommodates latchbolts up to 5/8" throw.

* NOTE: Fail safe negates the fire rating of the product.

Features

- Tamper resistant
- Static strength 1,500 lbs
- Dynamic strength 70 ft-lbs.
- Endurance 1,000,000 cycles
- Field selectable fail secure/ fail safe
- Non-handed
- Internally mounted solenoid
- Accommodates 1/2" - 5/8" latchbolt (5/8" with 1/8" door gap)
- Strike body depth 1-1/16"
- Plug-in connector
- Trim enhancer included
- SecuriCare five-year, no-fault, no questions asked warranty (Addition of SMART Pac® III extends the warranty to 10 years)

Options

- LBM - Latchbolt monitor

Accessories

- **150** Strike Latch Guard
- **HES**CUT-MTK Metal Template Kit
- **2005M3** SMART Pac® III
- **2001M** Plug-in Bridge Rectifier
- **2004M** ElectroLynx® adapter
- **2006M** Plug-in Buzzer
- **5104-1** Stackable Lip Extension
- **5104-1-1/4** Stackable Lip Extension
- **5104-1/2** Stackable Lip Extension



Grade 1



SecuriCare
Warranty



Cylindrical
Locksets



Field Selectable
(Fail secure
/Fail safe)



Dual Voltage
12/24



PoE
Friendly



Outdoor
Rated



Burglary
Rated



Windstorm
Rated



ASSA ABLOY

5300 Series Electric Strike

Certifications

- ASTM E330 Certified
- ANSI/BHMA A156.31, Grade 1
- ANSI/SDI 250.13 Certified
- CAL FIRE, 3776-1654:0502
- NFPA-252 Fire Door Compliant
- RoHS Compliant
- UL 10C Fire Rated
- UL 294 Listed
- UL 1034 Burglary-Resistant Listed and Suitable for Outdoor Use
- CAN/ULC-S104 Listed

Specifications

Frame Application

- Metal
- Wood

Electrical

- 240 mA at 12 VDC/VAC
- 120 mA at 24 VDC/VAC
- DC continuous duty/AC intermittent duty only

Dimensions

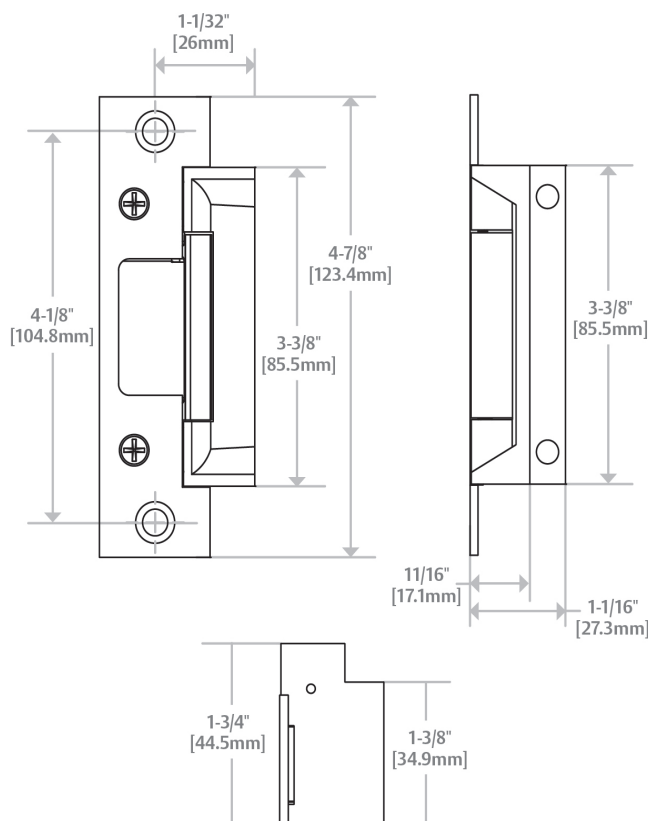


Diagram shown with 501 Option

How to Order

Specify quantity and the following information. Order related products separately

SERIES	MODEL	FINISH	OPTION (S)
5300	C	- 630	- LBM
5300 Universal Electric Strike; faceplate option kits ordered separately	C* Complete Electric Strike; includes the 501 and 501A faceplates (Blank) Strike Body Only	630 Satin Stainless Steel	LBM Latchbolt Monitor

*Complete Pacs are only available in the 630 finish.

FACEPLATE OPTIONS	FINISH
502	- 613E
For Cylindrical Locksets (ANSI Metal)	605 Bright Brass
501 Option 4-7/8" x 1-1/4"	606 Satin Brass
For Cylindrical Locksets (Aluminum)	612 Satin Bronze
501A Option 4-7/8" x 1-1/4"	613E Dark Oxidized Satin Bronze Powder
502 Option 7-15/16" x 1-7/16"	629 Bright Stainless Steel
503 Option 6-7/8" x 1-1/4"	630 Satin Stainless Steel
For Cylindrical Locksets (Wood)	BSP Black Suede Powder
504 Option 10" x 1-3/8"	

NOTE: Electric strike compatibility is determined at time of electric strike product release. ASSA ABLOY is not responsible for incompatibility of products that have changed in design or craftsmanship by their respective manufacturers. When compatibility is a concern, contact Customer Support for application assistance.