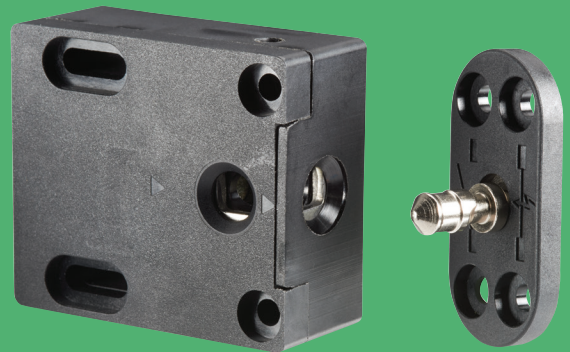


610 Series Cabinet Lock

Electromechanical Cabinet Lock



The compact and cost effective cabinet locking solution

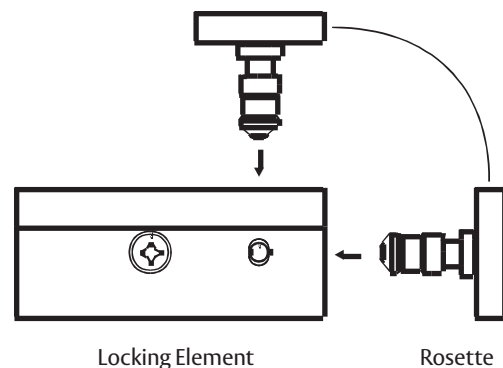
The HES 610 Cabinet Lock can be triggered by a simple relay as part of an access control system or with a stand-alone keypad. The HES 610 is available with or without locked state monitoring and has over 200 lbs of holding force.

Features

- Fail safe / fail secure (field selectable)
- Compact design fits most drawers and cabinets
- Versatile installation either at the side or front of cabinets
- SecuriCare three-year, no-fault, no questions asked warranty

Options

- LM Locked state monitoring



Locking Element

Rosette



SecuriCare
Warranty



Swinging
Door



Drawers



Field Selectable
(Fail secure
/Fail safe)



Dual Voltage
12/24



PoE
Friendly



ASSA ABLOY

610 Series Cabinet Lock

Specifications

Electrical

- Dual Voltage 12/24 VAC/VDC field selectable
- Monitored contact rating 25 V / 1 A
- 260 mA at 12 VDC or 130mA at 24 VDC
- 140 mA at 12 VAC or 70 mA at 24 VAC

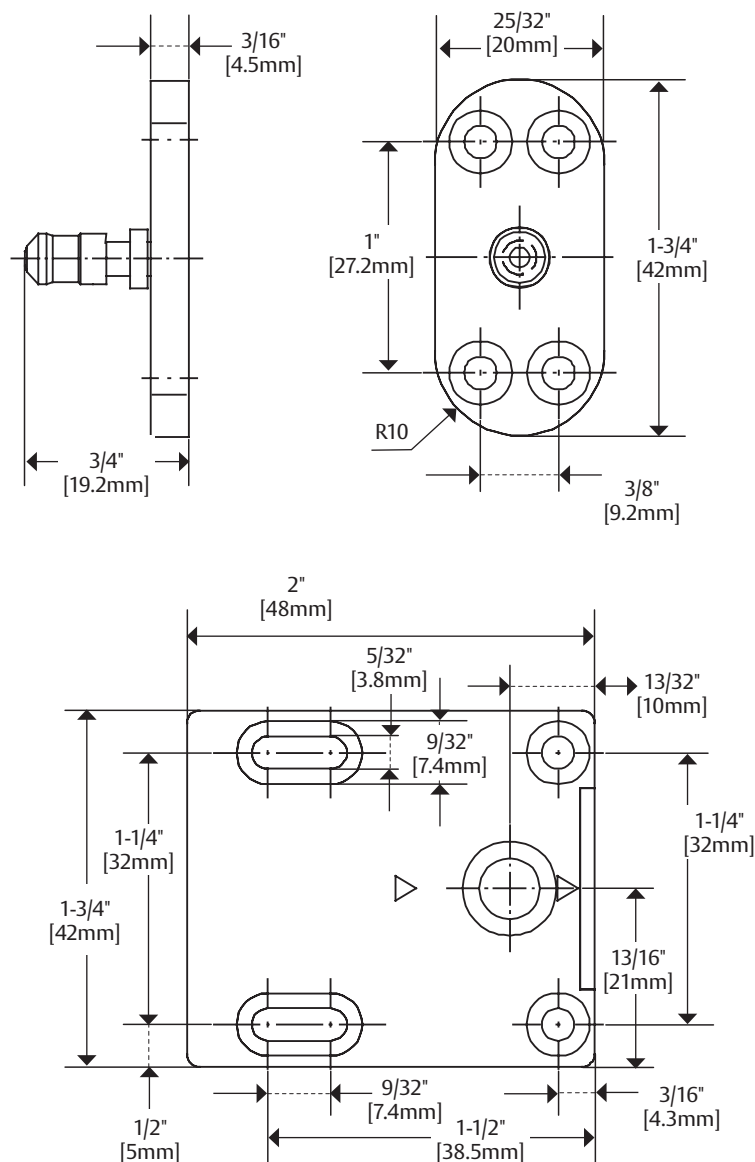
Holding Force

- Static Strength 200 lbs

Environmental

- Operational Temperature 14° to 104° F [-10° to 40° C]
- IP20 Rated
- Indoor Use

Dimensions



How to Order

SERIES	OPTION (S)
610	– LM
610 Cabinet Lock	(blank) No Monitoring LM Locked state monitoring