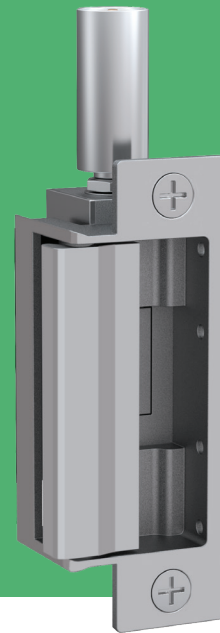


Folger Adam 742 Electric Strike

Works with all major mortise and cylindrical locksets with up to 3/4" throw latchbolt



The 3-hour fire rated, industrial grade electric strike designed for extreme heavy duty applications.

The all stainless steel construction of this device makes it ideal for high abuse applications. The Folger Adam 742-75 Series comes standard with a variety of brackets to accommodate all major mortise and cylindrical locks with up to a 3/4" throw latchbolts.* This is the one electric strike to choose when you are uncertain of which lockset you may encounter.

Features

- Tamper resistant, heavy-duty construction
- Constructed entirely of stainless steel for strength and corrosion resistance
- Static strength 1,500 lbs
- Dynamic strength 70 ft-lbs
- Endurance 1,000, 000 cycles
- Horizontally adjustable keeper to allow for door and frame misalignment
- Deadlatch tabs included
- 3/4" keeper depth
- Non-handed
- Fail secure (standard)
- Plug-in connector
- Full keeper shim
- SecuriCare five-year, no-fault, no questions asked warranty (Addition of SMART Pac® III extends the warranty to 10 years)

Options

- Fail Safe
- LBMLCM - Latchbolt & Locking Cam Monitor

Accessories

- **152** Universal Mounting Tabs
- **2001-1** Wire-in Bridge Rectifier
- **150** Strike Latch Guard
- **2005M3** SMART Pac® III
- **2001M** Plug-in Bridge Rectifier
- **2004M** ElectroLynx® adapter
- **2006M** Plug-in Buzzer



Grade 1



SecuriCare
Warranty



Cylindrical
Locksets



Mortise Locks
without
Deadbolt



PoE
Friendly



Fire Rated



Burglary
Rated



ASSA ABLOY

Folger Adam 742 Electric Strike

Certifications

- ANSI/BHMA A156.31, Grade 1
- CAL FIRE, 3776-1654:0501
- UL 10C Fire Rated
- UL 294 Listed
- UL 1034 Burglary-Resistant Listed

Specifications

Electrical

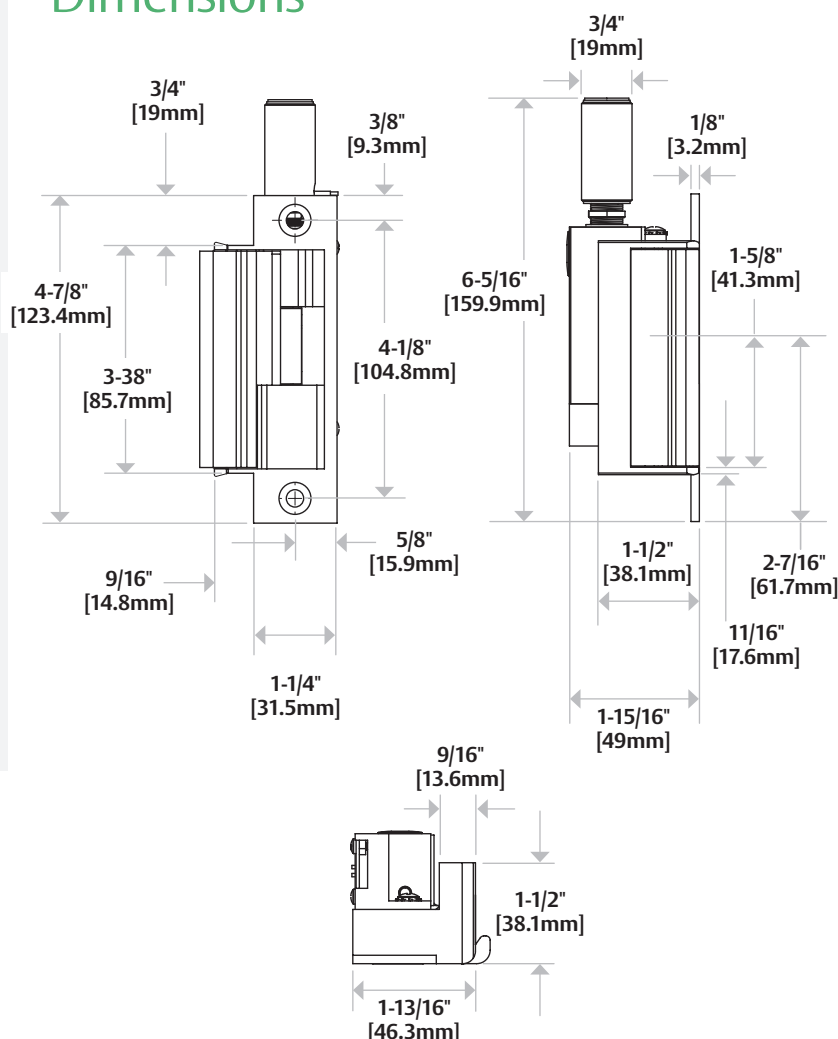
- 290 mA at 12VDC continuous duty
- 150 mA at 24VDC continuous duty
- PoE friendly

742-75

For use with 1/2" [12.7mm]*, 5/8" [15.9mm]* or 3/4" [19mm] throw latchbolts in hollow metal frame applications

* NOTE: When using LBMLCM with a 1/2" [12.7mm] or 5/8" [15.9mm] keeper latchbolt detection may be dependent on the door gap.

Dimensions



How to Order

| SERIES | FAIL SECURE / SAFE | VOLTAGE | FINISH | OPTION (S) |
|---|--------------------------------|----------------------------|--|--|
| 742-75 | - F | - 12D | - 613E | - LBMLCM |
| COMPLETE PACS | (blank) Fail Secure (standard) | 12D 12 Volt 24D 24 Volt | 605 Bright Brass 606 Satin Brass 612 Satin Bronze 613E Dark Oxidized Satin Bronze Powder 629 Bright Stainless Steel 630 Satin Stainless Steel | (blank) No Monitor LBMLCM Latchbolt & locking cam monitor |
| 742-75 Hollow metal frames, for up to a 3/4" throw latchbolt without deadbolt | F Fail Safe | | | |

| FAIL SECURE / SAFE | SERIES | FINISH |
|--------------------|---|--|
| - F | 742-75 | - 613E |
| FACEPLATE ONLY | | 605 Bright Brass 606 Satin Brass 612 Satin Bronze 613E Dark Oxidized Satin Bronze Powder 629 Bright Stainless Steel 630 Satin Stainless Steel |
| FP Faceplate | 742-75 Hollow metal frames, for up to a 3/4" throw latchbolt without deadbolt | |

NOTE: Electric strike compatibility is determined at time of electric strike product release. ASSA ABLOY is not responsible for incompatibility of products that have changed in design or craftsmanship by their respective manufacturers. When compatibility is a concern, contact Customer Support for application assistance.